

NIPPURA
CORPORATE PROFILE



Humans on land and the creatures of the sea,
we strive to create an environment which brings us closer together.
A new form of communication between man and ocean through
invisible acrylic panels.

Who can you trust?



NIPPURA brings your design
dreams to life.



We make crystal clear acrylic panels that we form, join, and freely process to make giant windows and intricately shaped aquarium tanks. Our technological and planning capabilities have made it possible for us to "fabricate" the largest and most complex aquariums in the world but we believe it is the power of dreams that has driven us to "create" wonder.



Hands of Craft

Our Hands produce the world's
largest acrylic panels.



Regardless of the size, small or large, we produce each panel under exacting tolerances and crystal clarity. At this level of detail, you have to depend on more than just exacting machines and precise technology, you have to have skilled hands of "craft". We develop each of our technicians to fully utilize all of their senses to become master craftsman contributing to the team and producing perfection. We continually push-through the boundary of possible.

Making Life Exciting



We make aquariums that are fun
and beneficial for the inhabitants.



By incorporating interactive features in our aquariums we provide more stimulating and beneficial settings for the inhabitants; creating an even more entertaining experience for the visitors. By having a firm grasp of ecological conditions and technical know-how, we are able to continually design and produce new tanks. Make the inhabitants happy and you will have happy visitors.

The summer I fell in love
with a dolphin.

I will always remember
My first visit to the aquarium
and meeting you
Your sleek body and the brilliant blue
I felt as if I could just reach out
and touch you
I didn't want to leave

NIPPURA Aquarium Solutions

With just one glance, an experience of a lifetime.
Our goal is to achieve that feeling with every panel.



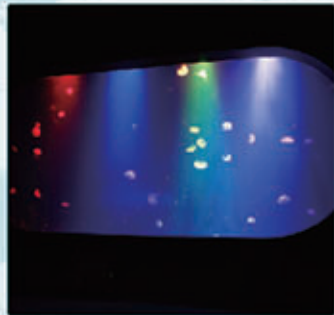
We deliver excitement

For each dream we created a tank brimming with life and excitement.
Before we knew it, we had circled the globe, here we go again...



Dome Tank

The 360° dome tank reveals the world within from every angle.



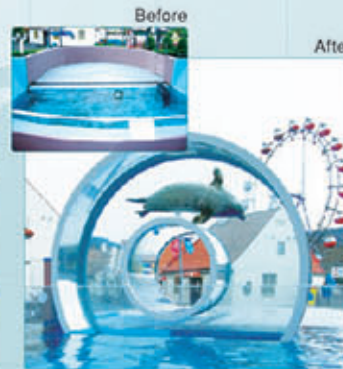
Unit Tank

Tanks with integral life support systems for efficiency and convenience.



Oval Tank

Ideal for exhibiting sunfish and migratory fish normally very difficult to raise in captivity.



Donut-shaped Tank

Seals frolic round and round above and below the natural water level.



Cylinder Tank

Stand-alone acrylic tanks of any diameter imaginable.



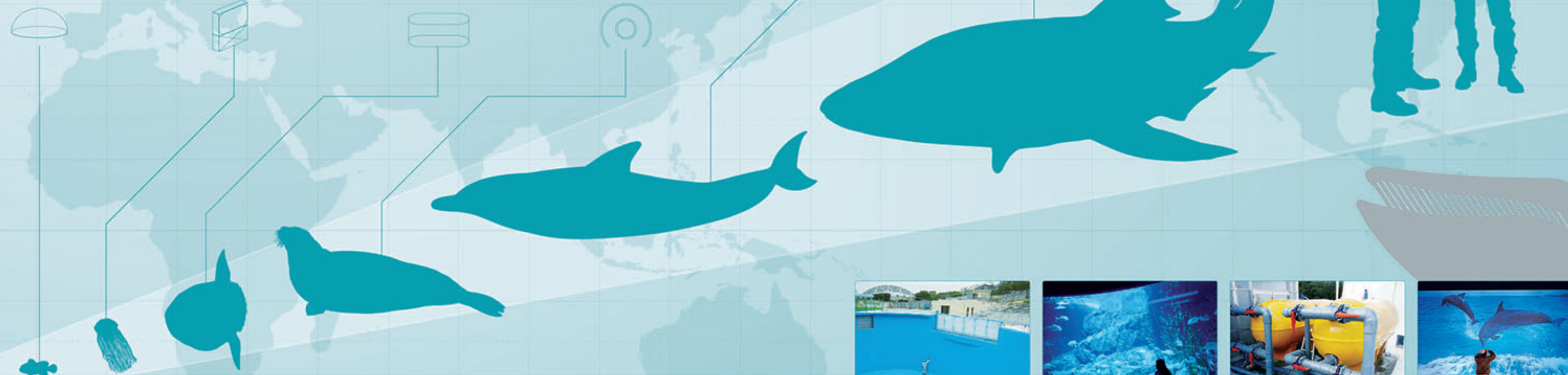
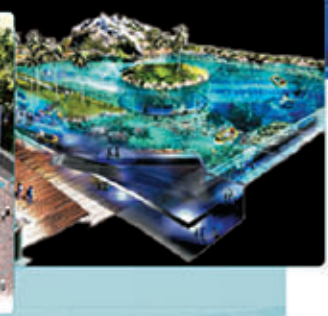
Giant Acrylic Panel Tank

Our polymer bonding technology maintains unrivaled crystal clarity. We also chemically join on site to form giant aquatic tanks.



New Inspiration

We continue shaping new ideas as we broaden our horizons beyond the conventional to new aquatic encounters.



Scope of Business

- Large Size Acrylic Aquarium Viewing Windows "Aquawall™"
- Aquarium Environment Display Theming
- Rear Projection Screen "Blue Ocean™"
- Aquarium Tank FRP Waterproofing System "Sumilining™"
- Life Support Systems
- Design and Planning of New Aquarium Facilities



Sumilining™

With a long history of high quality and durability, Sumilining FRP waterproofing system is now used at many leading aquariums throughout the world.



Aquarium Environments

Environment display theming so real and always perfectly in harmony with the natural ecosystem.



Cutting Edge Life Support Systems

Hi-Tech R&D improving on the efficiency and performance of our unit life support systems.



Blue Ocean™

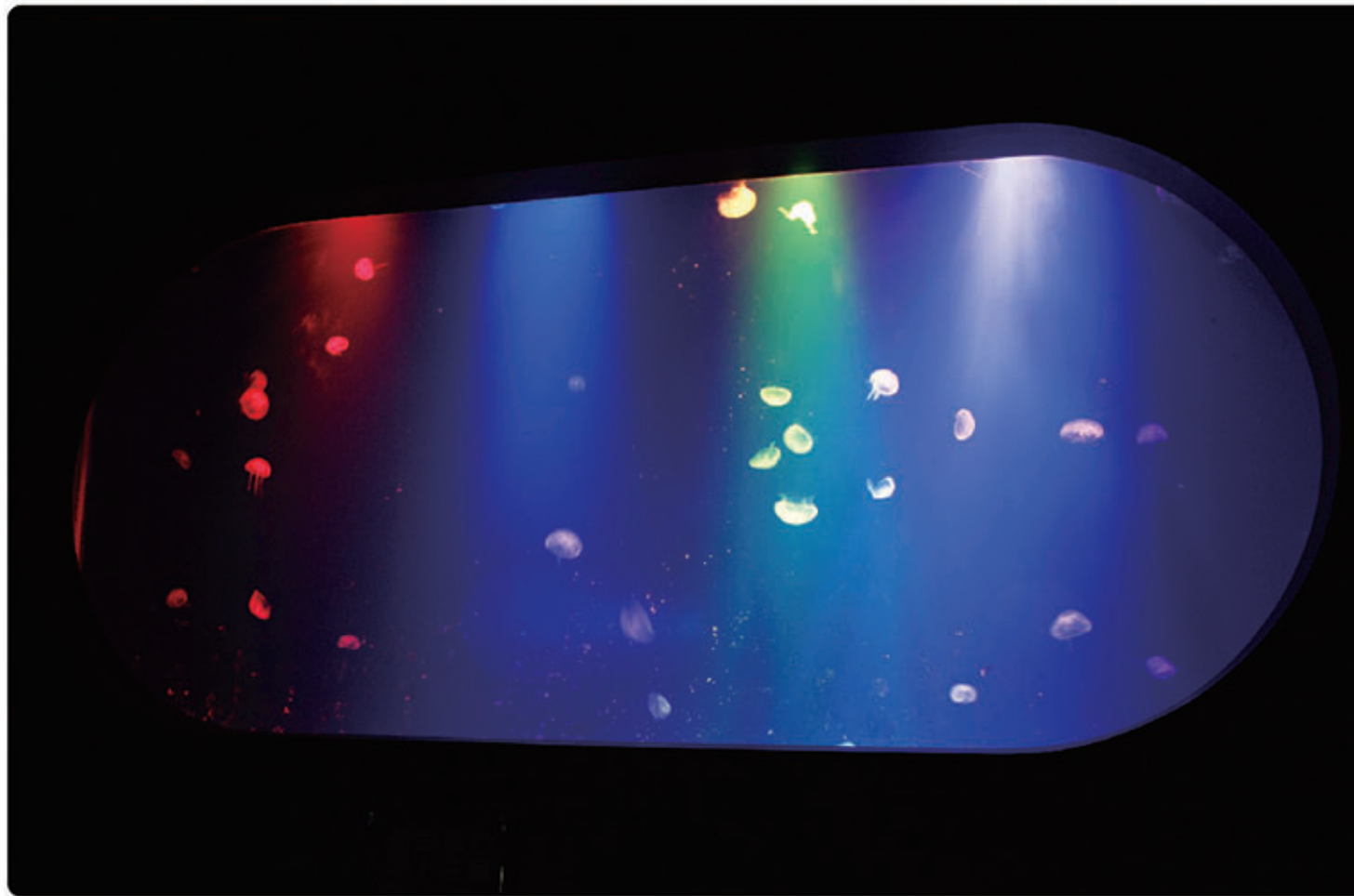
Seamless acrylic high-definition projection screens up to 340 inches which harness the full power of HD projection.

Case Study

We don't just do what we can. We do what we dream.

Mission 1

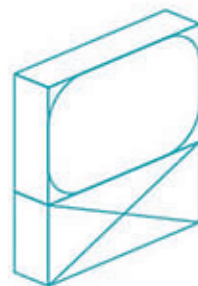
Create exhibit spaces that soothe the soul & inspire.



Solution

Unique Infinite Depth View Tanks.

Produce a tank that has a borderless, infinite depth view of the mysterious world of jellies. Our blue layer acrylic technology allows for amazing infinite depth effect on any exhibit. With the addition of special lighting and audio effects, the exhibit becomes a crescendo of beauty and exhilaration.



Unit Tank

Mission 2

Make the visitors feel there is nothing between them and the sea.



Solution

Create a tunnel of full visibility.

The full tunnel takes visitors on a stroll underwater with an all encompassing view in all directions. Through close collaboration with the client in creating unique and practical designs, visitors are able to get a new perspective of aquarium life.



Tunnel Tube

Case Study

Mission 3

To design exhibits that encourage lively, healthy and interesting behavior.



Solution

Produce a tank which compliments the curiosity and instincts of the animal to dive and periscope.

A tank that makes the visitor want to stay and watch forever. Make a tank that the seals will love to live in. Overcome gravity with technology and a dash of daring and all involved reap the benefits.



Donut-shaped Tank

Mission 4

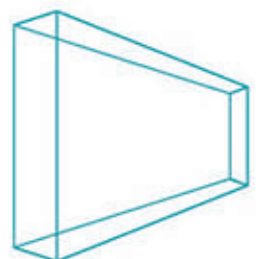
Produce a Tank that totally overwhelms the imagination.



Solution

Make sure the visitor lets out an audible gasp from the force of the display.

We started with the eyes and thoughts of a child, make it gigantic, make it so big it becomes everything I see, make it so it overwhelms me. Forget limitations, just make it. With that attitude we have now set two Guinness records for the world's largest acrylic panels.



Giant Acrylic Panel Tank



Craftsmanship

We call our factory the "Work Shop"

It's not just having computer driven robotics, or the world's most technically sophisticated acrylic processing equipment, it's the expertise and skill of our craftspeople that have made NIPPURA known worldwide.

As every aspect of Acrylic is totally transparent, there is no hiding; every step must be directed by master craftsmanship. Whether polishing, molding or bonding, every process in the creation of acrylic panels requires the precision and delicacy of a surgeon. Long lasting, durable, crystal clear Acrylic = Nippura Aquawall.





NIPPURA - dedicated to making your dreams come true

Making dreams into reality is what has driven us
for the last 40 years. No challenge,
no matter how big or how small,
can stop us from reaching your dreams.
Our aquariums have a spirit of curiosity and wonder
that is best experienced than explained.

Around the world NIPPURA is uniquely
uniting worlds of air and water
... share your dreams with us ...

Corporate Profile

NIPPURA CO.,LTD.

Representative	President Yasuhiro Shikiyama
Incorporated	September 1969
Capitalization	¥80 million
Principle Shareholders	Yasuhiro Shikiyama Sumitomo Chemical Co., Ltd.
Core Businesses	Aqua-Wall™ design, fabrication and installation large acrylic panels for aquariums. Sumilining™ aquarium waterproof lining construction BLUE OCEAN™ projection screen fabrication Planning, design, and consulting for aquariums and other facilities.

Offices	<p>■Head Office & Factory 3800-1 Inoue, Miki-cho, Kita-gun, Kagawa-ken, Japan TEL: +81-87-864-4111 FAX: +81-87-864-4611</p> <p>■Shido Factory 4532-28 Kamosho, Sanuki-shi, Kagawa-ken, Japan TEL: +81-87-895-1306 FAX: +81-87-895-1316</p> <p>■Okinawa Factory 12-61 Suzaki, Uruma-shi, Okinawa-ken, Japan TEL: +81-98-921-2661 FAX: +81-98-921-2662</p> <p>■Kobe Factory 4-5-7 Minatojima-minami-machi, Chuo-ku Kobe-shi, Hyogo-ken, Japan TEL: +81-78-381-9681 FAX: +81-78-303-3301</p> <p>■U.S. NIPPURA INC. 600 Heather Lane Suite HT Charlotte, NC 28209 USA TEL: +1-704-561-9191 FAX: +1-704-561-9196</p>
---------	-------------------------------------------------------------------------------------------------------------------------------------------------------------------------------------------------------------------------------------------------------------------------------------------------------------------------------------------------------------------------------------------------------------------------------------------------------------------------------------------------------------------------------------------------------------------------------------------------------------------------------------------------------------------------------------------------

History

1969	Nippura Kako Co., Ltd. incorporated in Takamatsu City, Kagawa Prefecture (Capital ¥1 million)
1970	World's first acrylic free-swimming aquarium delivered to the Yashima Yamanoue Aquarium
1974	Kaiyo-Setsubi Co., Ltd. was established
1976	Head Office moved to Mure Town, Kita County, Kagawa Prefecture
1981	Nippura Kako and Kaiyo-Setsubi merged to form Nippura Kaiyo-Setsubi Co., Ltd. (Capital increased to ¥10 million)
1982	Expanded into the overseas market
1989	Shido Factory started operation
1991	Capital increased to ¥40 million
1993	North America Office opened (Seattle, Washington, USA)
1995	Capital increased to ¥80 million
1996	Company name altered to Nippura Co., Ltd.
1998	US Nippura Inc. was established in Charlotte, NC.
1999	North America office was closed and transferred to US Nippura Inc.
2001	Relocation of head office to present location.
2003	"Blue Ocean" showroom was built at head office. A single 22.5m W x 8.2m H x 60cm thick, 135 ton acrylic panel was completed at Okinawa Churaumi Aquarium. Set Guinness world record.
2004	Okinawa Factory was established.
2006	Acquisition of Yashima Aquarium-renovated and reopened to the public
2008	A single 33m W x 8.3m H x 75cm thick, 250 ton acrylic panel was completed the Dubai Mall. Set a new Guinness world record.
2009	Kobe Factory was established.
2014	A single 40m W x 8.3m H x 65cm thick, 260 ton acrylic panel as well as 12m Dia. Underwater viewing acrylic dome panel was completed at Hengqin Ocean Kingdom in China. Set new multi Guinness World Records.
2016	Kobe Factory expansion



本社・本社工場

NIPPURA CO.,LTD.

URL www.nippura.com/

U.S. NIPPURA INC.

URL www.usnippura.com/

